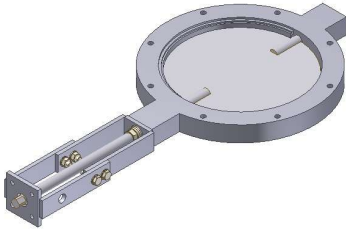
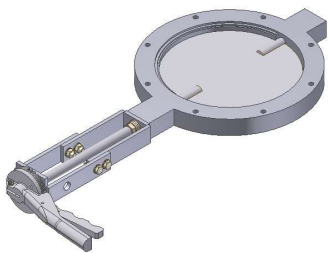


Butterfly valve RDB-LK



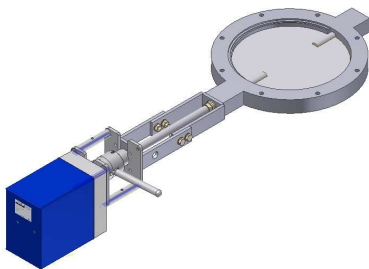
Nominal sizes:
DN 71 to DN 900

Flange connection:
To be mounted between flanges
DIN 24154 R2



Temperature range:
Up to 1100°C

The temperature resistance depends on the pressure.



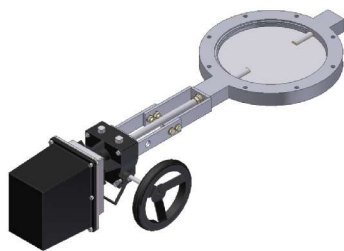
Valve types:

Swing-through	Leakage ~1,0% (KVS-Value)
Stop bar	Leakage ~0,3% (KVS-Value)
Stop bar + packing insert	Leakage ~0,1% (KVS-Value)
Leakage depends on temperature, pressure and nominal size	

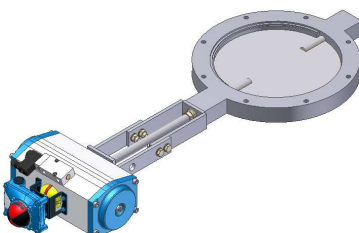
Materials:

Housing, valve plate, shaft	1.0038 / 1.0570 / 1.4301 1.4541 / 1.4878 / 1.4828 1.4841
-----------------------------	--

Other materials on request



Shaft sealings:
adjustable packing box or O-rings



Variants:
manual, electric, pneumatic