

Gear uncoupling GA / Manual operation HBS

The rotary actuators AN can optionally be equipped with a gear uncoupling and / or a manual operator (hand crank or hand wheel).

The gear uncoupling causes an interruption of the flow of power between the motor and the output shaft and thus lifted the self holding torque at the output shaft. The shaft can be turned easily. Therefore, the manual operation is to be used only at an unencumbered state of the actuator.

Before using the manual operation the gear uncoupling (if existing) has to be set to „Hand“.

The manual operation is to be used via the side-mounted square shaft SW10mm, which gets connected to the output shaft via a bevel gear inside the actuator.

In- and uncoupling via the union nut can be done as follows:

Union nut screwed out – Automatic-Use

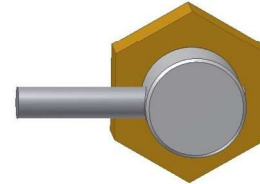
Union nut screwed in – Manual-Use

The operation of the square shaft can be done with a 10mm spanner or a 12mm ring spanner. On request, we supply a matching hand crank or hand wheel.

Because the limit switches and the potentiometer also turn at the same time, an overdrive of the final positions has to be prevented absolutely.

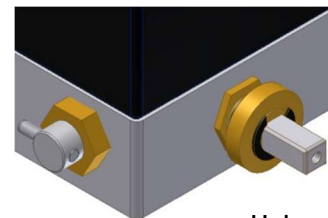
After using the manual operation, the gear uncoupling has to be reset to „Auto“. With this, the flow of power between the motor and the output shaft will be restored and the drive remains because of the motor holding torque in its set position.

Gear uncoupling



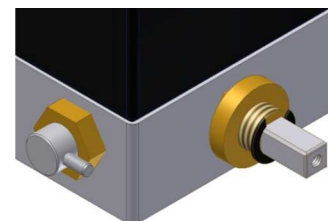
Manual operation

Automatic-Use



Union nut –
screwed out

Manual-Use



Union nut –
screwed in

Hand crank



Hand wheel,
optionally with handle

