

Gear uncoupling GA / Manual operation HBA

The rotary actuators AN can optionally be equipped with a gear uncoupling and / or a manual operator (hand crank or hand wheel).

The manual operation includes an automatic feather uncoupling, which prevents the rotating of the hand crank or the hand wheel while electrical operation of the drive.

Before using the manual operation the gear uncoupling (if existing) has to be set to „Hand“. This causes an interruption of the flow of power between the motor and the output shaft and thus lifted the self holding torque at the output shaft. Therefore, the manual operation is to be used only at an unencumbered state of the actuator.

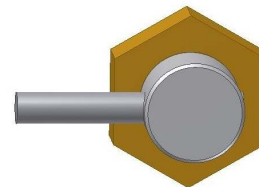
A manual operation is possible via a hand crank or a hand wheel. Therefore, the manual operator has to be pressed inside until the bevel gears work and at the same time turned into the desired direction.

Because the limit switches and the potentiometer also turn at the same time, an overdrive of the final positions has to be prevented absolutely.

When the manual operator gets released after reaching the desired position, it will automatically reset by spring pressure into the rest position.

After using the manual operation, the gear uncoupling has to be reset to „Auto“. With this, the flow of power between the motor and the output shaft will be restored and the drive remains because of the motor holding torque in its set position.

Gear uncoupling



AN40 with gear uncoupling and hand crank



AN300 with gear uncoupling and hand wheel

