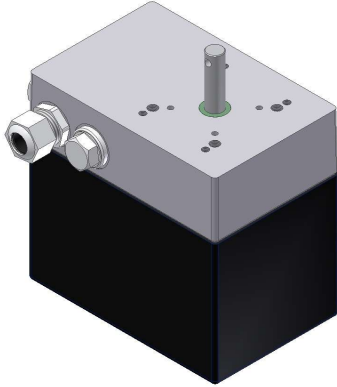


Shaft / displacements

Driven shaft

AN40 with cross-hole (Standard)



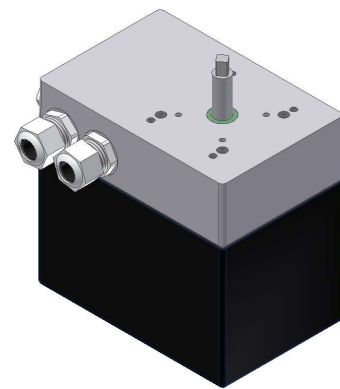
AN40 with feather key (Option)



AN40 with inner square (Option)



AN40 with outer square (Option)



Displacements

The following displacements are adjustable via the limit switches built in the actuator.

Standard:

AN40 : 0 - 320°

AN100: 0 - 320°

AN300: 0 - 90°

Options:

AN40 : up to 250 turns

AN100: up to 250 turns

AN300: up to 72 turns

