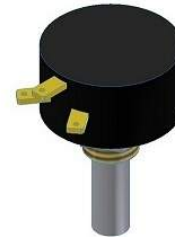


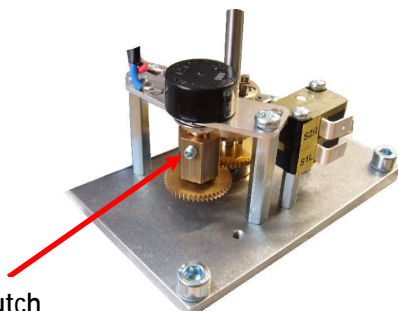
Potentiometer RP19 / RP20 / MP21

General:

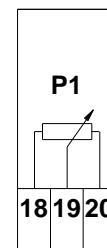
A voltage potential gets measured with a mobile sliding contact on a resistance element with a fixed resistance value. According to the principle of the voltage divider circuit the potentiometer can be used as well as a set point device as a position decoder. The permissible tension depends on the size of the total resistance.



Typ	RP19	RP20	MP21
Technology	Wirewound	Wirewound	Conductive plastic
Electrical angle of rotation	320°	355°	320°
Mechanical angle of rotation	320° with Stop	360° without Stop	320° with Stop
Ohm range (ohm)	100 - 20k	100 - 20k	1k - 50k
Ohm tolerance	± 3%	± 3%	± 15%
Linearity tolerance	± 0,5%	± 0,5%	± 1%
Grinder current max.	30mA	30mA	1mA
Max. electrical achievement (W)	1,5	1,5	0,8
Life span in million shaft movements	1	1	10
Permissible ambient temperature	-40°C to +105°C		



Friction clutch



Adjustment

Adjust limit switches according to Manual. Drive the actuator into the right final position (CLOSE).

Potis with stop have automatically adjusted roughly via the friction clutch yet.

Connect gauge to terminals 18 and 19.

Adjust the exit to ~10 Ohm by turning the 6-kant friction clutch.

Drive the actuator in both final positions and mediate the exit between both. (e.g. 50 – 950 Ohm)