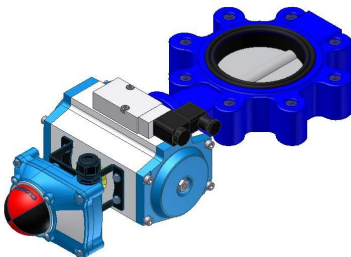
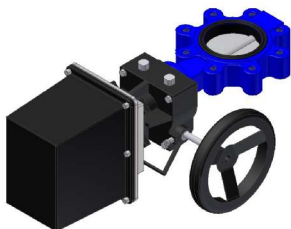
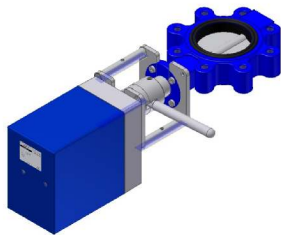
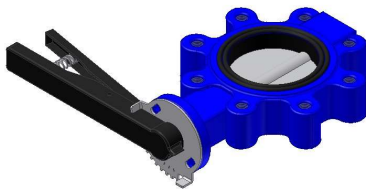
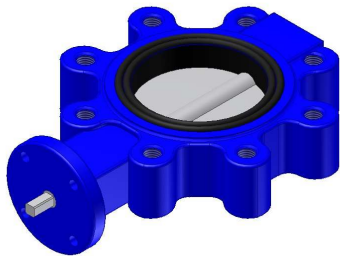


# Shut-off valve AKP2



Nominal sizes:

DN 50 to DN 600

Connections:

To be mounted between flanges

PN10 - 16 n. DIN 2631 - 2633

<u>Sealings (collar)</u>	<u>Allowed Temp.</u>
NBR	max. 100°C
EPDM	max. 120°C
Hypalon	max. 120°C
Silikon	max. 170°C
Viton	max. 180°C

Sealing elements replaceable

Materials:

Housing: GG25 / GGG50

Valve plate: GGG-50 / 1.4408

Shaft: 1.4408

Other materials on request

Variants:

manual, electric, pneumatic