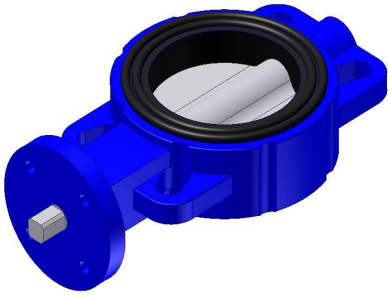


Shut-off valve AKP1

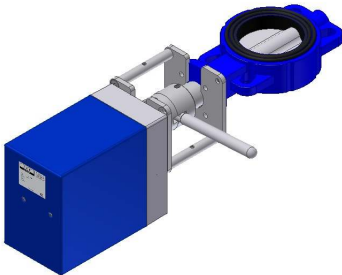


Nominal sizes:
DN 40 to DN 600

Connections:
To be mounted between flanges
PN6-16 n. DIN 2631 - 2633

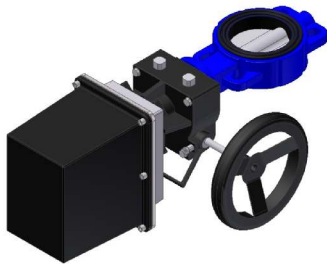


<u>Sealings (collar)</u>	<u>Allowed Temp.</u>
NBR	max. 100°C
EPDM	max. 120°C
Hypalon	max. 120°C
Silikon	max. 170°C
Viton	max. 180°C



Sealing elements replaceable

<u>Materials:</u>	
Housing:	GG25 / GGG50
Valve plate:	1.4408
Shaft	1.4408



Other materials on request

Variants:
manual, electric, pneumatic

