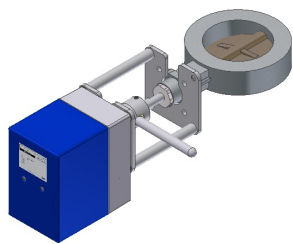
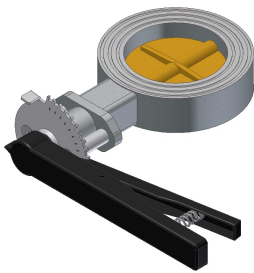
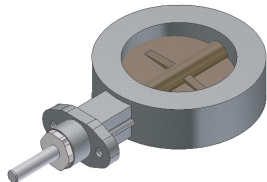


Butterfly valve RDE



Nominal sizes:

DN 32 to DN 200

Flange connection:

To be mounted between flanges
PN6-16 n. DIN 2631 - 2633

Temperature range:

Up to 130°C

The temperature resistance depends on the pressure.

Valve types:

Angled striking

RDE-07: Leakage ~0,3% (KVS- Value)

RDE-08: Leakage ~0,05% (KVS- Value)

Leakage depends on temperature, pressure and nominal size.

Materials:

Housing: GG25

Valve plate: Rg5

Shaft: 1.4057

Other materials on request

Shaft sealings:

O-Rings

Variants:

manual, electric