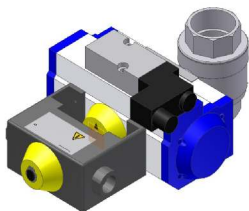
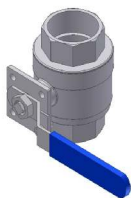
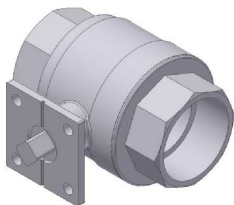


# Ball valve KHG-P2



**Nominal sizes:**

Inner thread G 1/4'' - 3''

**Connections:**

Thread

Execution: PN63

**Temperature range:**

Up to 180°C

**Materials:**

Housing:

1.4408

Ball:

1.4408

Ball sealing:

TFM1600

Other materials on request

**Variants:**

manual, electric, pneumatic