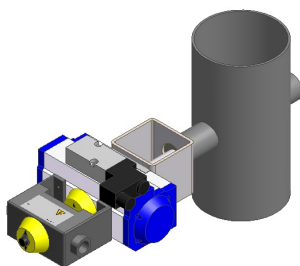
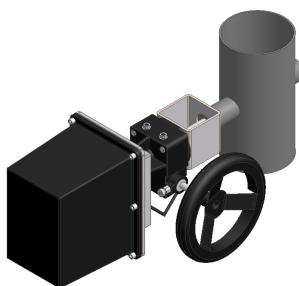
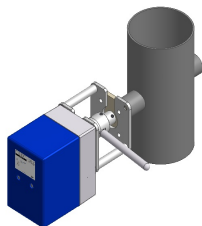
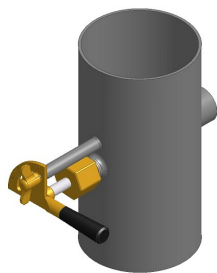
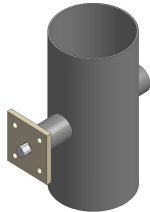


Welding valve ED



Nominal sizes:

Pipe \varnothing 21,3 to \varnothing 368,9

Connections:

To be welded in a pipeline

Temperature range:

Up to +1000°C

The temperature resistance depends on the pressure.

Valve types:

Swing-through

Angled-Striking or stop-bar

Leakage depends on temperature, pressure and nominal size.

Materials:

Pipe: 1.0038 / 1.4301 / 1.4571/ 1.4878/
1.4828 / 1.4841

Valve plate : Ms / 1.0038 / 1.4301 / 1.4571 / 1.4878/
1.4828 / 1.4841

Shaft: Ms / 1.4301 / 1.4571/ 1.4878 / 1.4828 /
1.4841

Other materials on request

Shaft sealings:

adjustable packing box or O-rings

Variants:

manual, electric, pneumatic