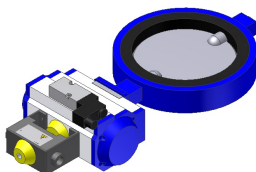
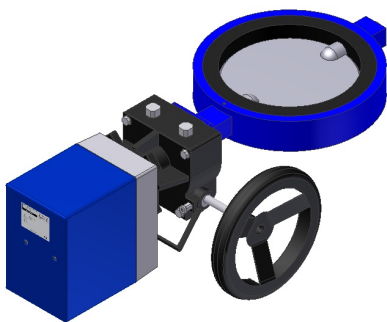
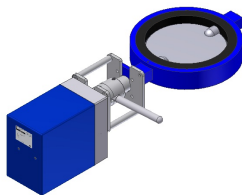
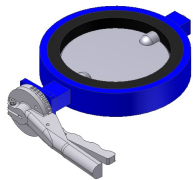
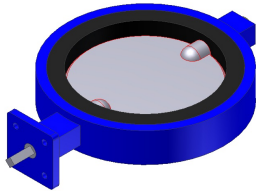


# Shut-off valve AKB



## Nominal sizes:

DN 50 to DN 600

Tight-closing according to DIN EN 12266-1, Leakage rate A

## Connections:

To be mounted between flanges PN10 n. DIN 2632

## Sealings (collar)

NBR black / white

AU Vulkollan

EPDM black / white

EPDM-HT

CSM Hypalon

FMP Viton

MVQ Silikon

## Allowed Temp.

-20°C bis +100°C

-10°C bis + 80°C

-30°C bis +120°C

-10°C bis +130°C

-20°C bis +120°C

-20°C bis +200°C

-40°C bis +230°C

Sealing elements replaceable

## Materials:

Housing:

Alu / 1.4301

Valve plate:

1.0038 / 1.4301

Shaft:

1.0050 / 1.4301

Other materials on request

## Variants:

manual, electric, pneumatic